

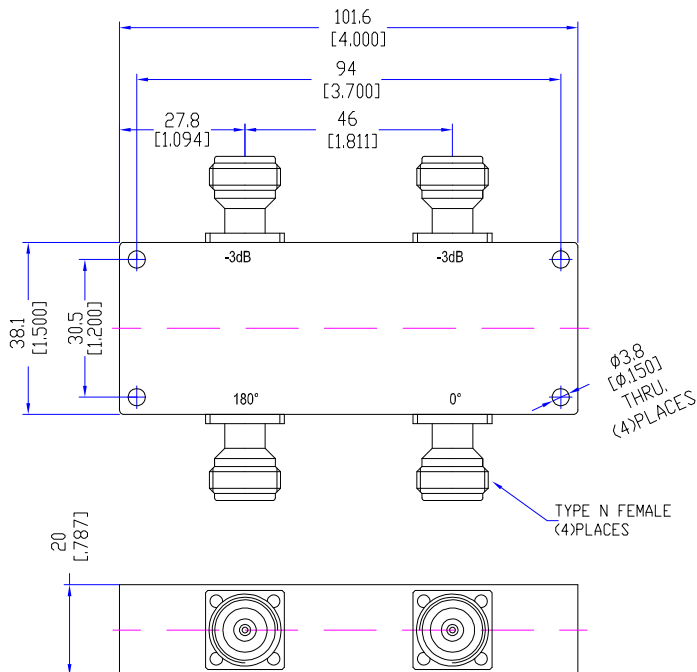
## Model THC1015BH1

### Features

Excellent phase & amplitude balance  
Low Insertion Loss & VSWR  
High Isolation

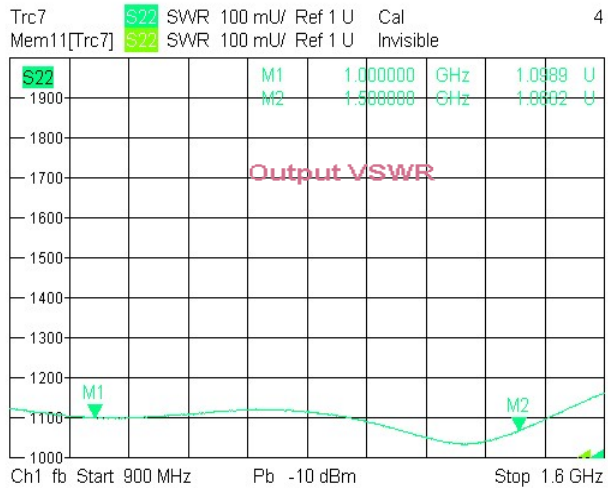
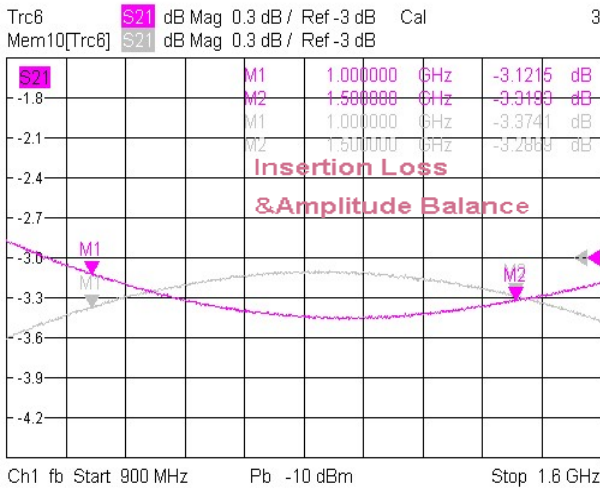
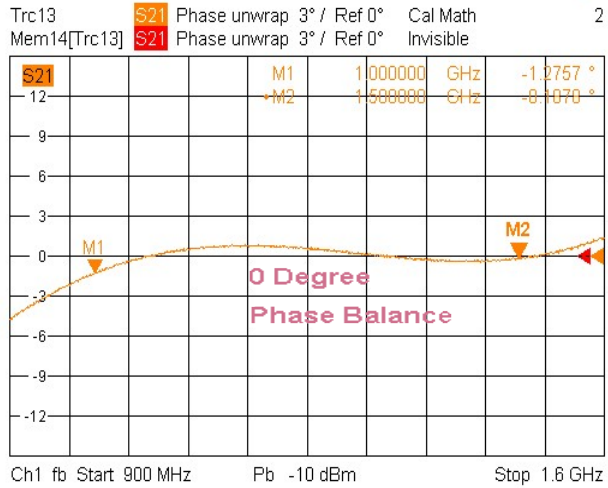
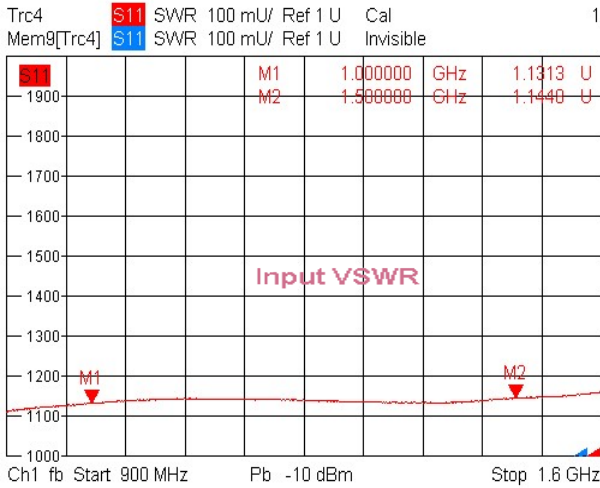
Technical Data Sheet			
Frequency Range	1.0~1.5GHz	Finish	Painted Blue_ RAL #5007
Nominal Split	3.01dB	Connector Body	Brass, Tri-Alloy Plate
Insertion Loss	≤0.40dB	Housing	Aluminum, 6061 T6 Clear Chem Conversion Film
Isolation	≥20dB		
Amplitude Balance	≤±0.3dB	Connector Pin	Beryllium Copper, Gold Plate
Phase Balance	≤±3°	Solder	Lead Free, RoHS Compliant
VSWR	≤1.20:1	Operating Temperature	-55~+85°C
<sup>1</sup> Power Handling	Average ≤128Watt Peak ≤2KW	Operating Humidity	Up to 95%, Non-Condensing
Impedance	50Ω	Weight	270g
Port Connectors	N-Female		

<sup>1</sup>Power Handling guaranteed when load's VSWR within 1.50:1.



## Typical Performance

### 1. Insertion Loss, Amplitude & Phase Balance, VSWR<sub>in</sub> 0°

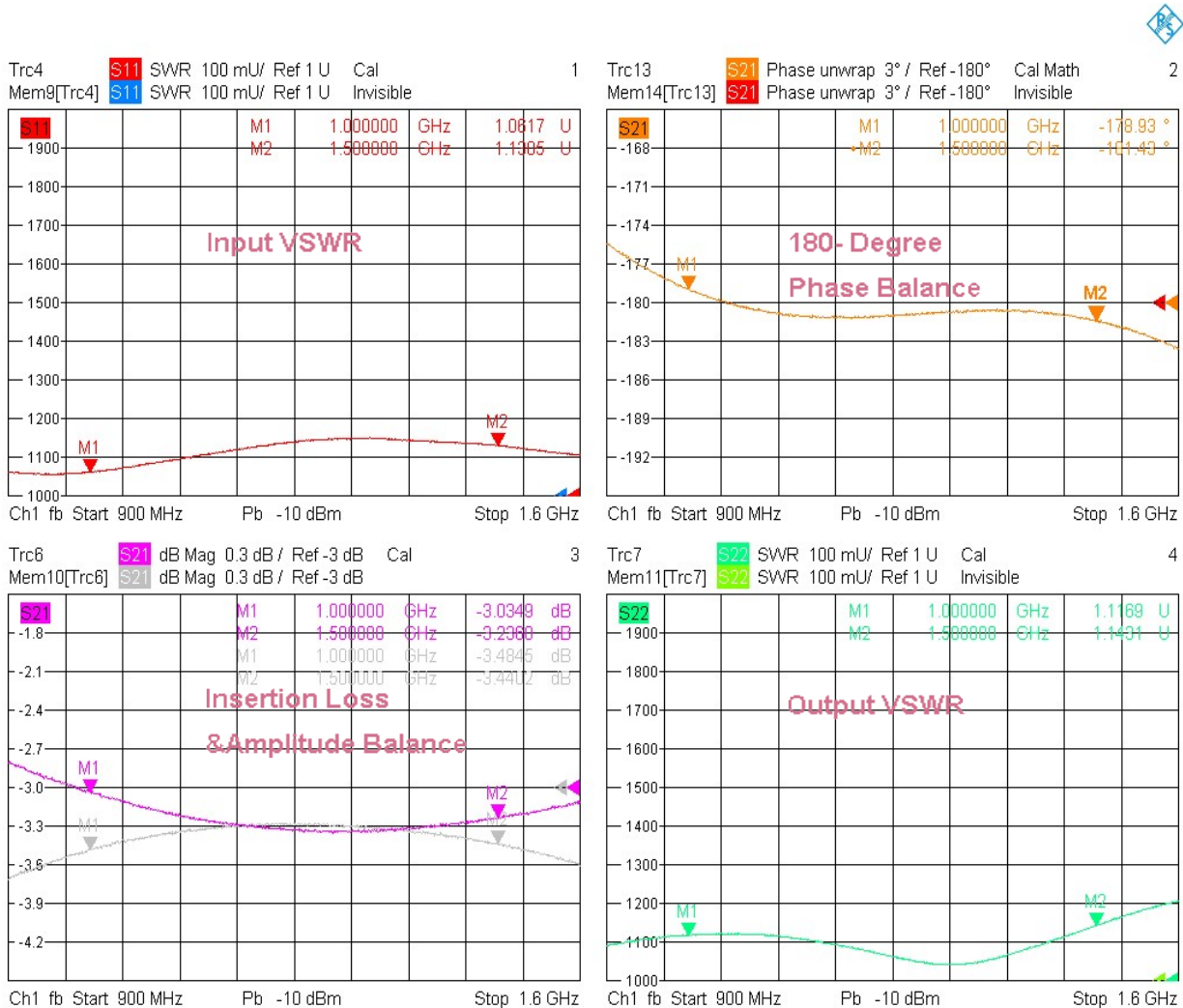


4/2/2021, 5:27 PM



## Typical Performance

### 2. Insertion Loss, Amplitude & Phase Balance, VSWR \_ 180°



### 3. Isolation

